

Welcome & Thank You!

We are very pleased that you have chosen to serve in the nursery! In the nursery, the family member we most often focus on is the child, but each child is part of a family to which we should minister too! Remember, for some parents, entrusting their child to someone else's care can be stressful. Visitors are often influenced to return by the caliber of care their child receives. Your genuine friendliness and interest in these parents and their children may communicate Christ's love more effectively than anything else. Don't take the value of your work lightly; be prepared for effective ministry!



When You Arrive

- Wear comfortable clothes for floor sitting.
- Arrive 20 minutes before start of service.
- Always wear your name tag.
- Wash your hands upon arrival & as otherwise instructed in the hand washing policy posted by the nursery sinks.

Barring unforeseen circumstances, there will always be a nursery committee member serving in the nursery as the supervisor for a.m. services. This person will greet parents and check in/out all children at the door. If you are supervising an evening service or no committee member is yet present, please refer to the instructions posted by the nursery door.



While You are Here

- Keep an eye out for safety concerns such as missing outlet covers, broken or small toys, etc.
- It's nice to catch-up with other adults in the nursery, but we are here to care for the children so...get down on the floor and play!

Before You Leave

- Assist the nursery supervisor with the clean-up list posted by the nursery door.
- Please remain in the nursery until the last child has been picked up.



Health & Safety Policies

- When children are present, a minimum of two volunteer attendants should always be present, at least one of which should be an adult 18 years or older & one of which should be female.
- Please follow hand washing & diaper changing procedures as posted above the sink.
- Only adults (18 years & older) should change diapers or assist children with using the bathroom.
- Diaper changing & bathroom help should only be administered when another nursery attendant is present in the nursery. If this is not possible, the parents should be paged to attend to the child themselves.
- The bathroom door should always be left ajar if assisting a child in the bathroom.
- No child is allowed in the nursery whom has had one of the following conditions within the past 24 hours: rash, cough, fever, vomiting, diarrhea, runny nose (if not clear), eye discharge, or a communicable disease. If a child is being treated with an antibiotic, (s)he should have received treatment for at least 24 hours before being placed in the nursery.
- Nursery attendants should also follow all the above health guidelines.

Other Responsibilities

If you are unable to serve on your scheduled day, please switch with another approved, equal volunteer (adult for adult, female for female etc.). Notify the Volunteer Chief of the switch.



Thank you for your invaluable service in our church nursery. If you have any questions, comments, or concerns, please contact one of us.

Sincerely,

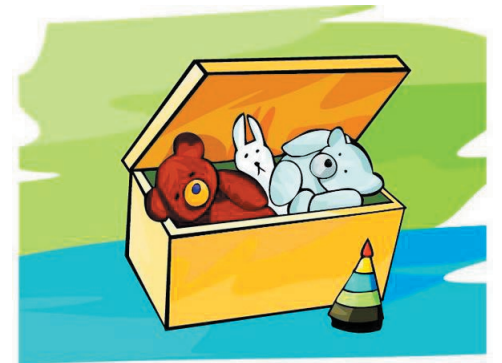
Your nursery committee members

“And he took the children in his arms, put his hands on them and blessed them.”

Mark 10:14



Nursery Attendant Guidelines



“Let the little children
come to me, and do not
hinder them, for the
kingdom of God belongs
to such as these.”

Mark 10:14

Calvin 
Christian Reformed Church

2313 Saemann Avenue
Sheboygan, WI 53081